

High TB burden | High HIV burden | High MDR-TB burden |

Population 2009 (millions) 83

Estimates of burden * 2009	Number (thousands)	Rate (per 100 000 pop)
Mortality (excluding HIV)	53 (36–74)	64 (43–90)
Prevalence (incl HIV)	470 (220–780)	572 (265–947)
Incidence (incl HIV)	300 (240–360)	359 (291–432)
Incidence (HIV-positive)	40 (22–63)	48 (27–76)
Case detection, all forms (%)	50 (42–62)	

Case notifications 2009

New cases	(%)	Retreatment cases	(%)
Smear-positive	44 396 (30)	Relapse	2 259 (64)
Smear-negative	50 978 (35)	Treatment after failure	381 (11)
Smear unknown	1 075 (<1)	Treatment after default	478 (13)
Extrapulmonary	50 228 (34)	Other	426 (12)
Other			
Total new	146 677	Total retreatment	3 544
Total < 15 years	3 014		

Total new and relapse	148 936	(99% of total)
Total cases notified	150 221	

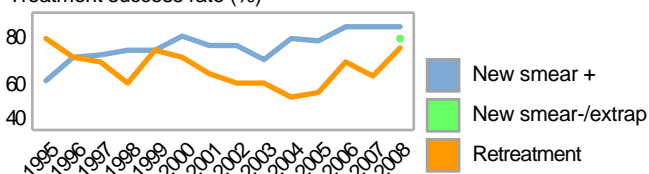
Drug regimens

Rifampicin used throughout treatment	No
% of patients treated with fixed-dose combinations (FDCs)	100
Paediatric formulations procured	Yes

Treatment success rate 2008 (%)

New smear-positive	84
New smear-negative/extrapulmonary	79
Retreatment	75

Treatment success rate (%)



MDR-TB, Estimates among notified cases * 2008

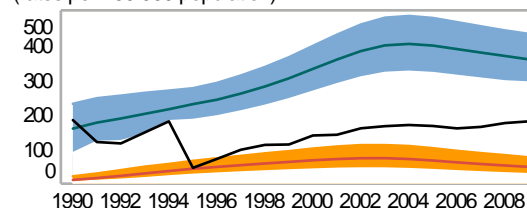
% of new TB cases with MDR-TB	1.6 (0.90–2.7)
% of retreatment TB cases with MDR-TB	12 (6.4–21)
Estimated MDR-TB cases among new pulmonary TB cases notified in 2009	1 500 (870–2 600)
Estimated MDR-TB cases among retreated pulmonary TB cases notified in 2009	420 (230–740)

MDR-TB reported cases 2009	New	Retreat-ment	Total
Cases tested for MDR-TB	16	298	377
% of notified tested for MDR-TB	<1	8	<1
Confirmed cases of MDR-TB	12	180	233
MDR-TB patients started treatment			88

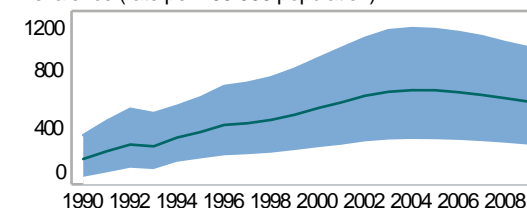
Laboratories	2008	2009	2010
Smear (per 100 000 population)	15	15	23
Culture (per 5 million population)	0.1	0.1	0.1
DST (per 10 million population)	0.3	0.2	0.2

Second-line DST available	Outside country
National Reference Laboratory	Yes

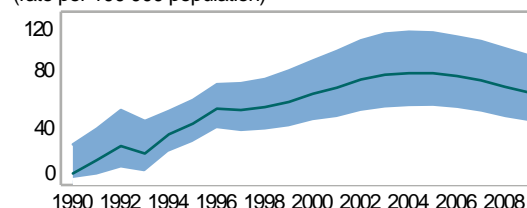
Incidence (HIV+TB in orange), notifications (black) (rates per 100 000 population)



Prevalence (rate per 100 000 population)



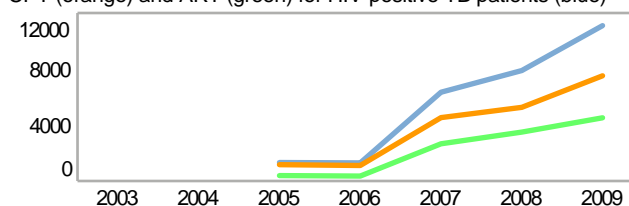
Mortality excluding HIV (rate per 100 000 population)



TB/HIV 2009

TB patients with known HIV status	56 040
% of TB patients with known HIV status	37
TB patients that are HIV-positive	11 098
% of tested TB patients that are HIV-positive	20
% HIV-positive TB patients started on CPT	68
% HIV-positive TB patients started on ART	41
HIV-positive people screened for TB	24 112
HIV-positive people provided with IPT	2 403

CPT (orange) and ART (green) for HIV-positive TB patients (blue)



Financing	2010	2011
Total budget (US\$ millions)	39	49
Available funding (US\$ millions)	31	40
% of budget funded	79	83
% available funding from domestic sources	25	20
% available funding from Global Fund	36	40

NTP Budget (blue) and available funding (green) (US\$ millions)

